

2022-2026 PARKS AND RECREATION PLAN

Village & Township of Fife Lake

TABLE OF CONTENTS

Contents

Chapter 1 – Introduction	1
Purpose and Project Overview	1
Chapter 2 – Community Description	2
Extent of Plan Focus.....	2
Welcome to Fife Lake	2
Transportation	3
Tourism	3
Geography and Topography	3
Climate	6
Soils.....	6
Vegetation.....	6
Water Resources.....	7
Population Trends.....	9
Chapter 3 – Administrative Structure	11
Chapter 4 – Inventory of Existing Parks, Natural Areas, and Recreation Facilities	13
Accessibility	13
Methods	13
Fife Lake Parks and Recreation Areas	14
Public Water Access	16
Pathways.....	17
Regional Assets.....	18
Natural Assets.....	20
Cultural Assets	21
Other Planning Initiatives.....	24
Previous Michigan Department of Natural Resources Grants in Fife Lake	25

Chapter 5 – Planning and Public Input Process.....	26
Recreation Analysis	32
Community Survey	33
Public Meeting and Plan Adoption	34
Chapter 6 – Goals and Objectives.....	36
Chapter 7 – Action Program	39
Pristine Recreation	39
Navigation and Connectivity	40
Park Improvements.....	40
Priority Plan	42
Appendices.....	43

List of Tables and Figures

Figure 2.1. Location of the Fife Lake Community	2
Figure 2.2. Stacked Chart of Population Growth in Fife Lake Township and Village.....	9
Table 4.1. MDNR Grading System for Accessibility.....	13
Table 5.1. Mini-Park.....	26
Table 5.2. Neighborhood Park	26
Table 5.3. School-Park.....	27
Table 5.4. Community Park	27
Table 5.5. Natural Resource Areas	27
Table 5.6. Regional / Metropolitan Park	28
Table 5.7. Sports Complex.....	28
Table 5.8. Special Use.....	28
Table 5.9. Park Trail.....	29
Table 5.10. Equestrian Trail.....	29
Table 5.10. NRPA Suggested Standard Facility Needs.....	31
Table 7.1. Parks and Recreation Action Plan.....	42

List of Maps

Map 1. Slopes	4
Map 2. Topography.....	5
Map 3. Water Features.....	8
Map 4. Public Land, Parks, & Recreation.....	23
Map 5. Service Areas.....	30

Chapter 1 – Introduction

Purpose and Project Overview

This recreation plan is intended to provide a vision for the future development of parks and recreation facilities in the Fife Lake community. This includes an inventory of existing park and recreation facility conditions, identification of needs and opportunities for future improvements, and a recommended action plan to implement the community's vision for recreation. This plan will serve as both a decision-making guide for local officials and also a resource for members of the local community engaged in recreation efforts. It also incorporates the requirements set forth by the Michigan Department of Natural Resources (MDNR) for the development of community park and recreation plans. The MDNR requires that a community have an up-to-date recreation plan on file before applying for any state recreation grants.

This plan is the result of over a year of community-wide discussions and cooperative planning efforts in the greater Fife Lake Community. The previous recreation plan was approved in 2010 and focused on pathway development and pedestrian circulation. This previous plan may continue as a comprehensive resource for future trail design and planning in the Fife Lake Community. However, the intent of this updated recreation plan to address on a broader scale issues and opportunities at all park and recreation facilities in the Fife Lake Community.

As used throughout this document, the "Fife Lake Community" constitutes the geographical areas within the Village of Fife Lake and Fife Lake Township. However, for the purposes of this plan and future planning and development efforts, the "Fife Lake Community" refers to one, larger cooperative community.

In compliance with DNR Guidelines, the implementation strategies expressed in this plan are identified for 2022-2026, at which time the plan will be updated. However, this plan is a working document and may require appropriate adjustments as conditions change and funding opportunities arise.

Chapter 2 – Community Description

Extent of Plan Focus

This recreation plan is intended to address parks and recreation facilities within the Village of Fife Lake and Fife Lake Township. It will also consider surrounding recreational opportunities to identify potential needs for recreation in the broader Fife Lake region. Together, the existing recreation facilities and identified needs will provide a foundation for recommended improvements and actions by the Fife Lake Area Planning Commission.

Welcome to Fife Lake

The Fife Lake community is located in the southeast corner of Grand Traverse County, in the northwest corner of Michigan's Lower Peninsula (Fig. 2.1). The Township borders four surrounding townships: Paradise and Union (to the west and north) in Grand Traverse County, Springfield in Kalkaska County to the east, and Liberty in Wexford County to the south. Together, Fife Lake Township and Village encompass 36 square miles. The Village of Fife Lake lies

in the northeastern portion of the Township, encompassing approximately 749 acres in sections 11, 12 and 14 of the Township. Fife Lake comprises about one-third of the Village land.

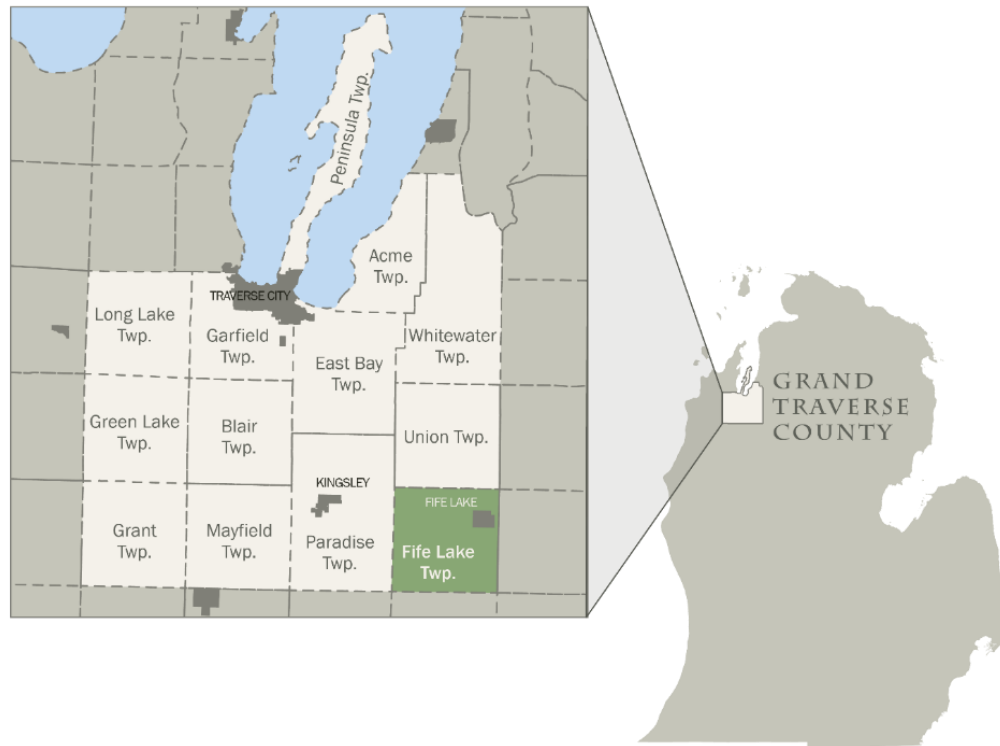


Figure 2.1. Location of the Fife Lake Community

Transportation

U.S. 131 is located in the Township and adjacent to the Village, providing a major north/south transportation route on the western side of the Lower Peninsula. Fife Lake is located a comparable distance between Cadillac to the south and Traverse City to the northwest, which are two major urban areas in the region. Kalkaska is located about fifteen miles to the northeast. These major urban centers provide employment, shopping, financial and health services, and the full range of urban services including major tourist and cultural attractions.

Tourism

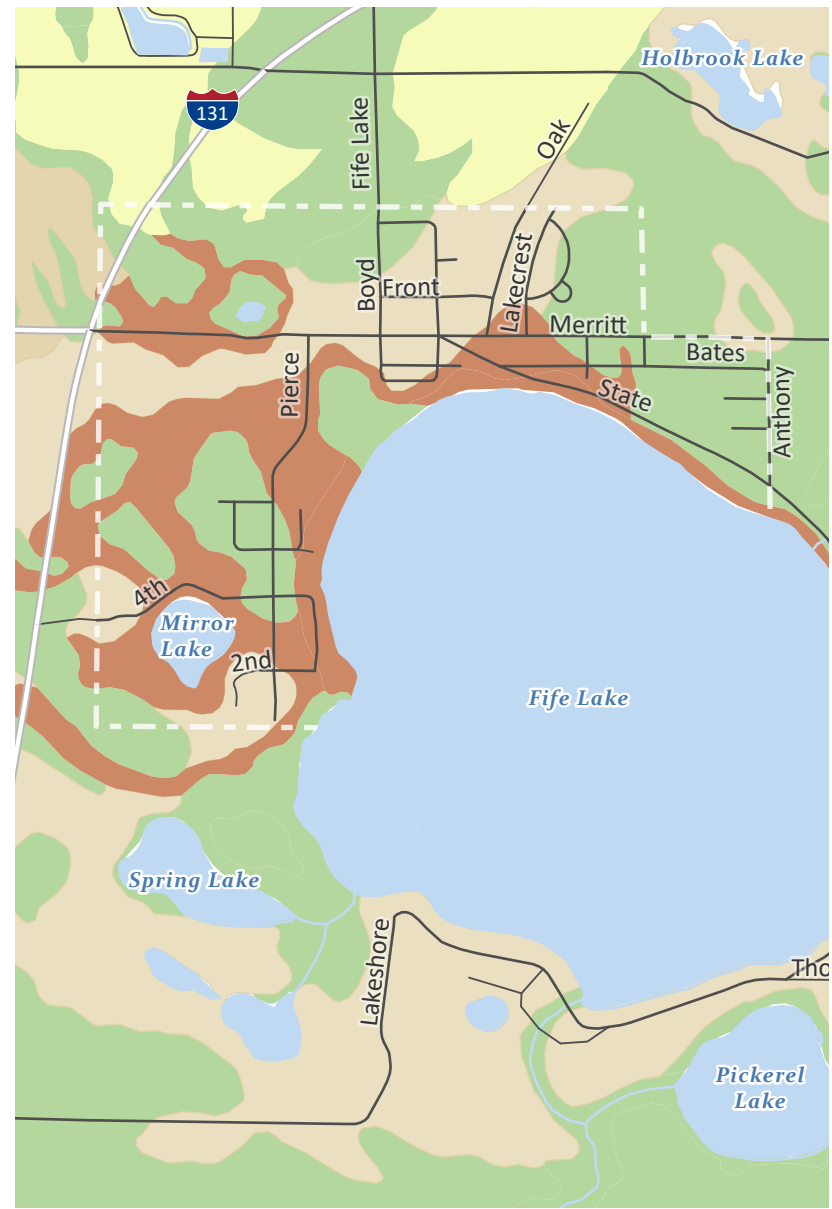
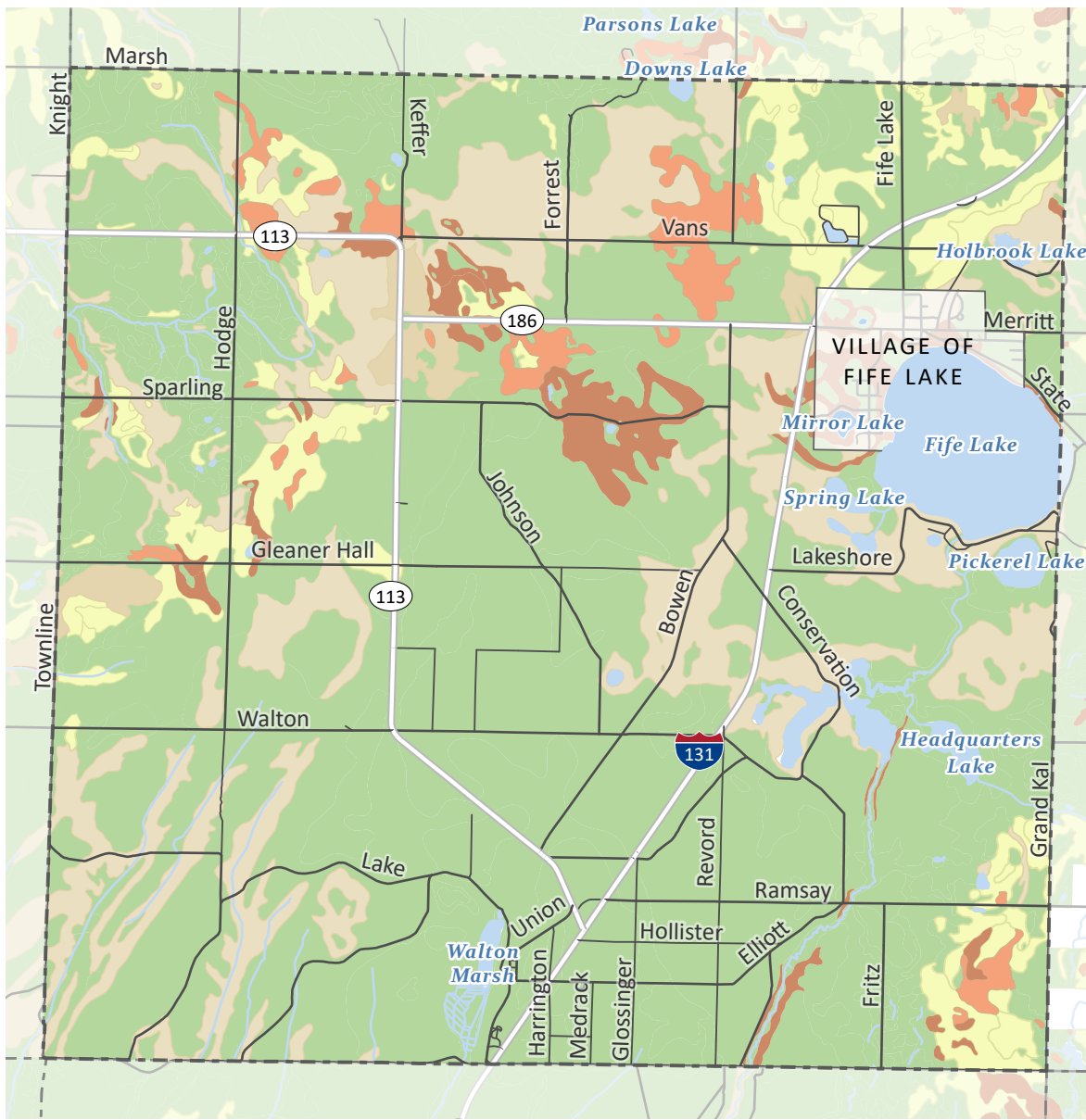
This region is a prime recreation/tourism area within the state. It is also a prime location for seasonal residency, especially during the summer months. The small, close-knit community is known for its historic, winding Village; freshwater lakes and rivers; and signature community events like the July 4th celebration "Best Fourth in the North."

Today, many residents spend their summers in the Village and Township of Fife Lake enjoying the Lake and pleasant summer breezes. It is estimated that the year-round population increases by about sixty to seventy percent during the summer "tourist season." However, winter sports which take advantage of ice fishing on the Lake and hunting, snowmobiling, and skiing in the nearby Pere Marquette State Forest have increased year-round tourism in the area. Geography and Topography

The geological composition of Grand Traverse County is much the same as that of the rest of Michigan's Lower Peninsula. That is, the County is characterized by hill-sized moraines, till and outwash plains, lakes formed by extinct glaciers, and glacial river beds. Fife Lake is located on an outwash plain and is bordered by the Port Huron Moraine to the north and west. Landscape features were produced by glacial deposition, resulting in rolling hills. The depth of the glacial deposition ranges from 50 to 200 feet thick in the Fife Lake area.

Within Fife Lake, and particularly in the Village, there is substantial topographic relief, with slopes ranging from two percent to twenty five percent (Map 1). The majority of the Village contains slopes of over eighteen percent, which in effect determines the physical layout of the Village's public spaces and the location and design of individual buildings. Most of the developed portions of the Village, however, are on slopes ranging from 6 percent to 12 percent.

Fife Lake is located 1,019 feet above sea level, while the highest point in the Village of Fife Lake is 1,071 above sea level (west of Fife Lake and north of Mirror Lake). The highest point in the Township is 1,180 feet above sea level (Map 2).



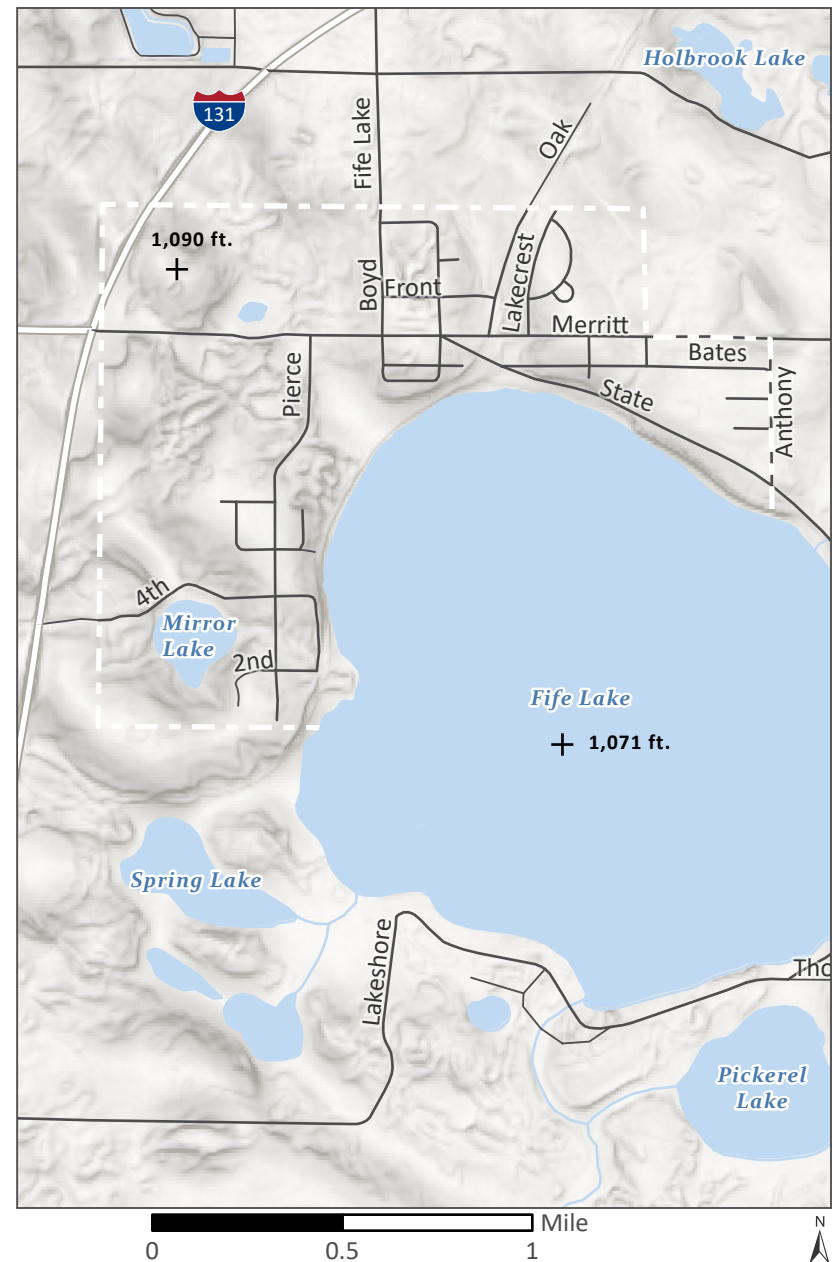
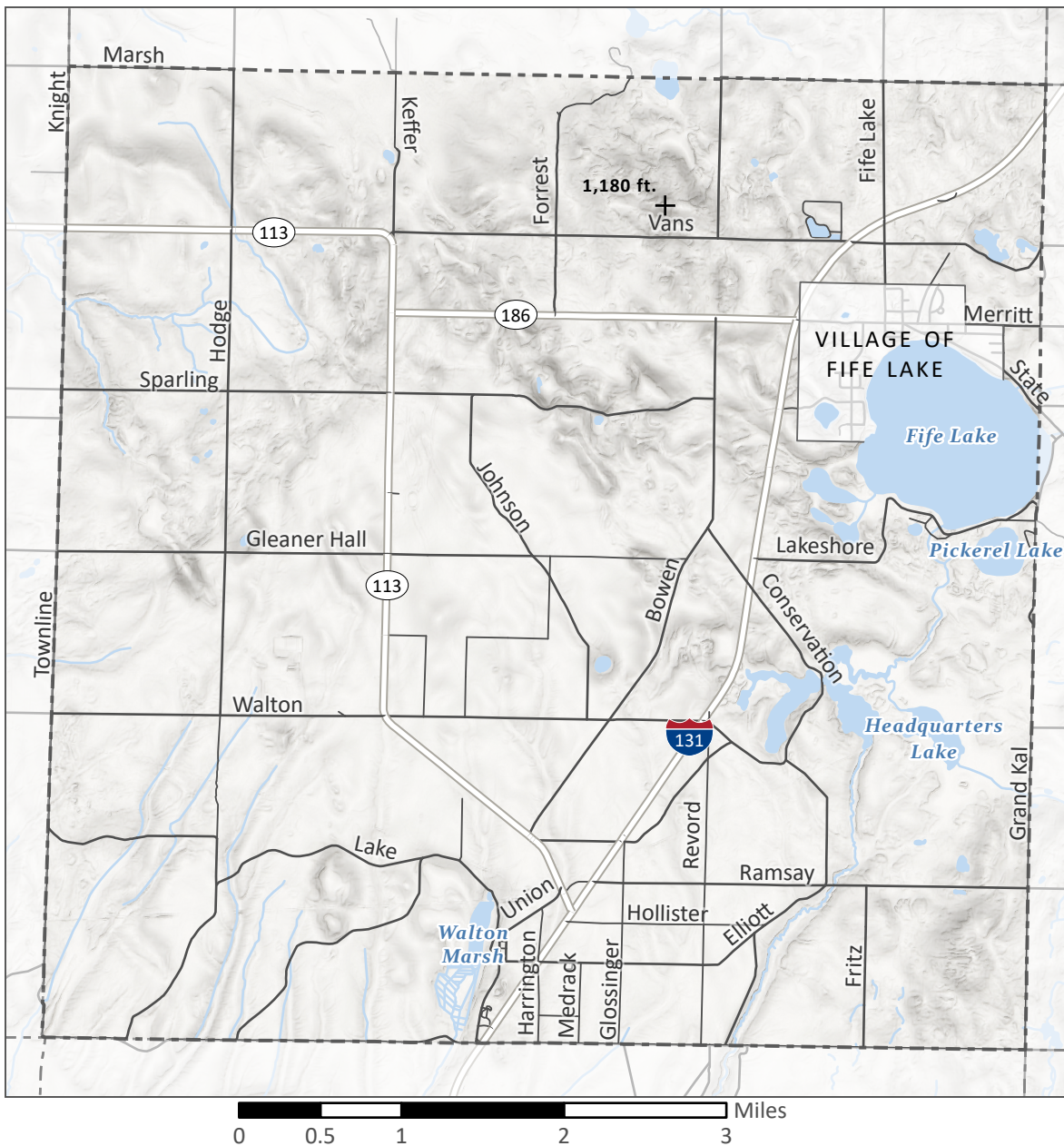
Map 1 Slopes

Fife Lake, Grand Traverse County, MI

Legend

- | | |
|--|--|
| Less than 5 degrees | 15-19 degrees |
| 5-9 degrees | Over 20 degrees |
| 10-14 degrees | |

Data Sources: NRCS, MI Open Data, MI DNR



Map 2
Topography
 Fife Lake, Grand Traverse County, MI

Data Sources: USGS, MI Open Data, MI DNR

Legend

Steep slope

Gentle slope

Climate

Grand Traverse County's climate is considered Quasi-Marine, since the prevailing westerly winds pass over Lake Michigan before reaching the County. This results in less temperature variation compared to other places where the wind primarily travels across land for a longer period of time. The lake cools the warm air in the spring and summer and warms the cool air in the fall, which delays the first frost and allows for a longer growing season.

The average high and low temperature in the Fife Lake area is around 54 and 35 degrees Fahrenheit, respectively. The area receives some form of precipitation an average of 128 days per year. Snow falls in Fife Lake as early as September and as late as April (or sometimes May!) with the greatest amount of snowfall on average in January. The area receives on average 88.9 inches of snow and 29 inches of rain annually, with the bulk of the rain events occurring between March and September.

Soils

Parent materials of Fife Lake soils are entirely glacial in origin. These materials are composed primarily of till, outwash, and sedimentary lake bed deposits. As the glaciers advanced from Canada, they carried with them varying types of soil and rock and retreated, leaving this material behind. As the areas dried out, wind action produced a fine material called 'loess' which, in some areas, completely covered even the basic glacial materials. A wide variety and mixture of sizes and types of parent material were then available for producing present-day soils. The resulting weathering and erosion, both by wind and water, of this post-glacial landscape eventually formed the present-day soils of Fife Lake.

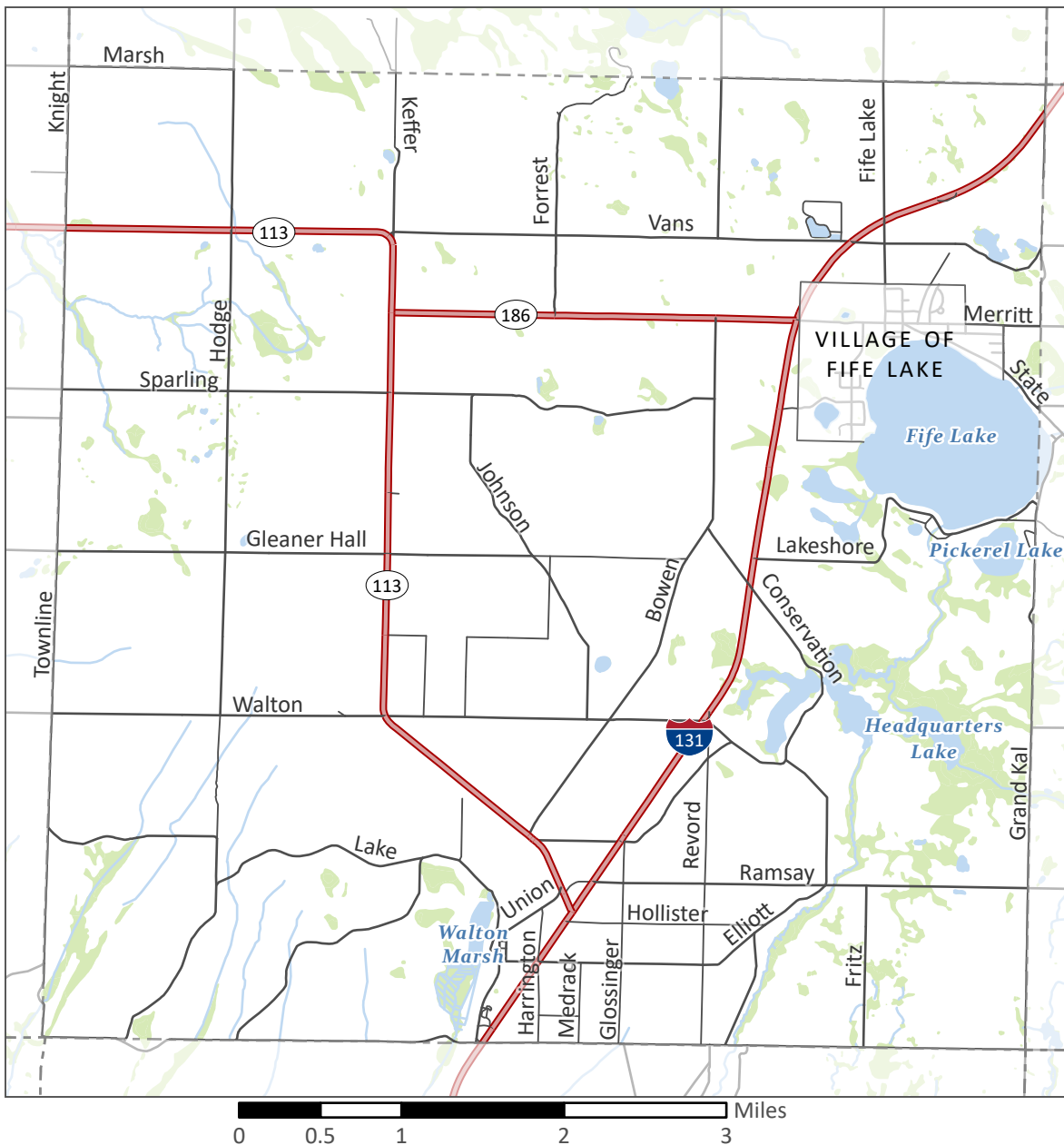
Vegetation

The Fife Lake area has two primary vegetation types. These are highland associations and low or wetland associations. Included in the Highland group are oak, maple, pine, and poplars. The lowland association includes cedar, birch, tamarack, and hemlock. The high and low land types seem to be well mixed throughout the Fife Lake area and this relationship provides for a wide variety of wildlife. The Village is almost completely forested, which provides for cool, shady summer breezes and moderates winter winds.

Water Resources

The Fife Lake Community contains several bodies of water (Map 3). The largest of these is Fife Lake located in the northeast corner of the Township encompassing approximately 617 acres. Approximately one-third of the lakefront lies within the borders of the Village; the remainder lies within Fife Lake Township and a small portion of the lake lies within Springfield Township of Kalkaska County. Other major bodies of water in the area include Headquarters Lake, Walton Marsh, Pickerel Lake, Spring Lake, and Mirror Lake.

Most water bodies within the Fife Lake area have fairly high water-quality levels. Much of the freshwater inflow into Fife Lake comes from an aquifer recharge area located north of the Village. This is a unique geologic feature that transfers surface water directly into the groundwater table through a 70-foot-deep layer of sand, bringing water recharge to the lake. Water flows out of the lake by way of the Fife Lake Outlet southerly through Headquarters Lake in the Pere Marquette State Forest, and then south ultimately to the Manistee River.



Map 3
Water Features
 Fife Lake, Grand Traverse County, MI

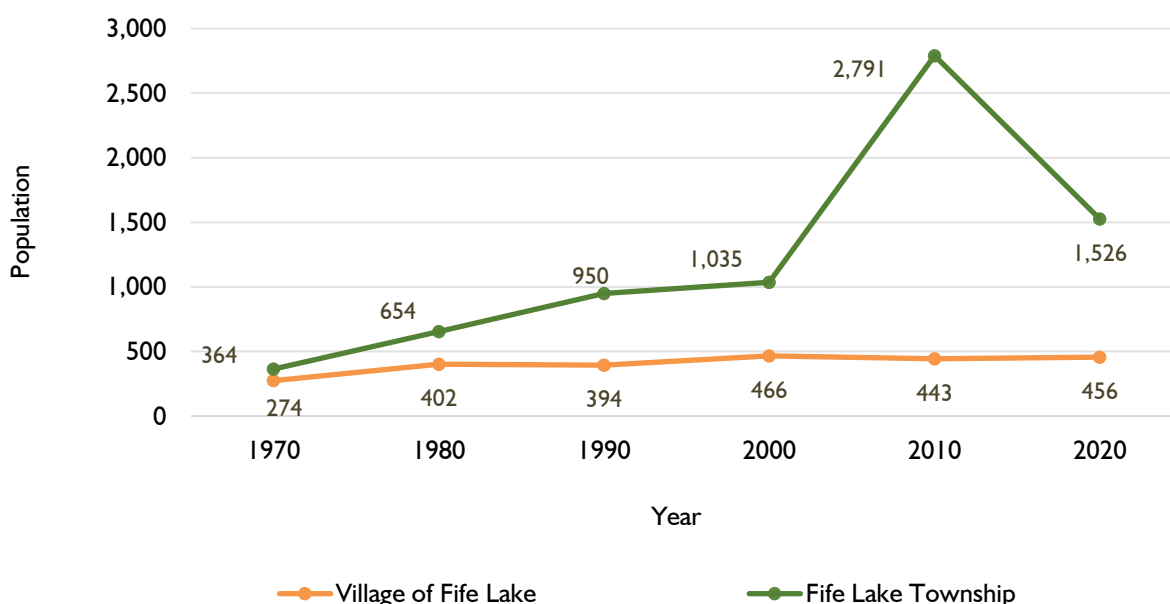
Legend

- Rivers
- Lakes
- Wetlands

Population Trends

The overall population of Fife Lake substantially increased from 1970 to 2020. The Township experienced significant growth between 2000 and 2010, with an increase of 118% during this time, though this may have been due to the presence of Camp Pugsley. This was much faster than growth in Grand Traverse County (12%). The Village has experienced cyclical gains and decreases in population, with the greatest population increase of 47% between 1970 and 1980. Between 2010 and 2020, the Township population decreased while the Village slightly grew, resulting in an overall decrease of 39% in the community. Comparatively, Grand Traverse County's population grew 9% from 2010 to 2020.

Figure 2.2. Stacked Chart of Population Change in Fife Lake Township and Village



Source: U.S. Census Bureau 1970-2020

Following are additional population and housing trends in Fife Lake that may influence the recreational needs and desires of the community:

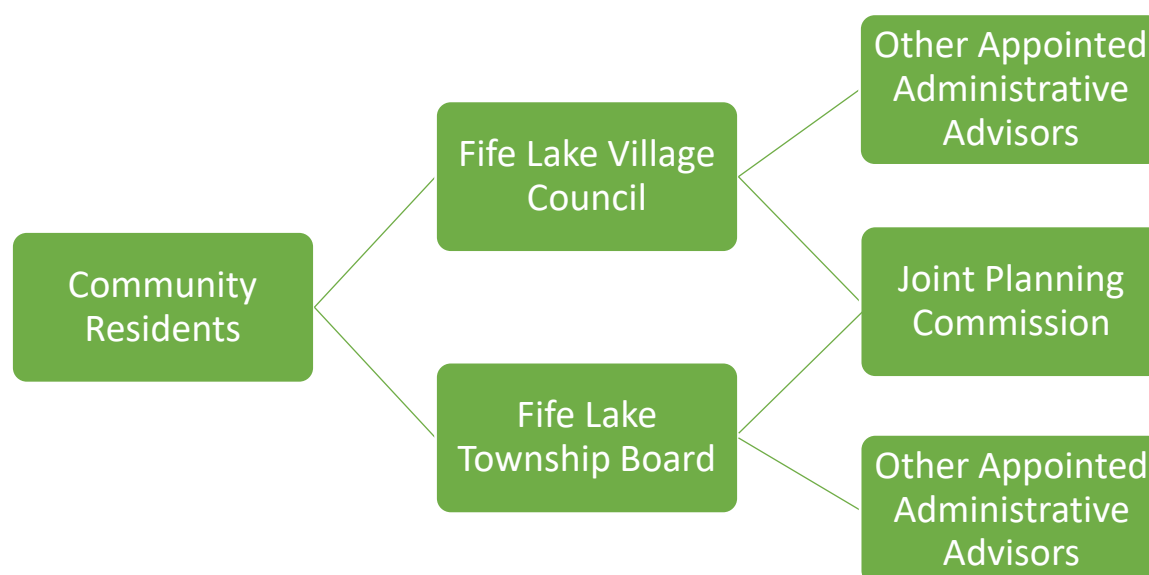
- **Age.** The Village and Township populations skew slightly older (46.6 years) than Grand Traverse County (42.9 years). The Village also had a higher median age than the Township. This suggests a need for recreational activities suitable for an aging population.
- **Education.** In 2019, the percentage of residents with a high school education or higher in the Fife Lake Community (91.3%) was similar to Grand Traverse County (94.8%) and Michigan (91.4%). The Fife Lake area had fewer residents with a

Bachelor's degree or higher (12.2%) compared to Grand Traverse County (39.1%) and Michigan (30.0%). This lower percentage of residents with advanced degrees may correspond to an older population.

- **Household Size.** In 2019, the average household size in the Township was 2.49, which was larger than the Village (2.37), Grand Traverse County (2.44), and Michigan (2.46). The variation between Township and Village household sizes may indicate the presence of more retirees in the Village and more families in the Township.
- **Occupancy.** Only 66% of housing in the Fife Lake Community was occupied in 2019, while 34% was vacant. The high presence of vacant units is likely attributed to the strong tourist population. Tourism greatly influences the demographic composition and housing market in the area, and thus also affects the desired types of recreation.
- **Home Value.** In 2019, median home values in the Township (\$114,900) and Village (\$109,900) were lower than Grand Traverse County (\$212,500) and Michigan (\$169,600). This suggests the presence of affordable and attainable housing. This trend may also support recreational opportunities that are available for residents of more modest means.
- **Commuting.** The majority of residents worked outside Fife Lake Township and Village (81.4%), with an average commute of 32.4 minutes in 2019. This implies that most residents work in neighboring urban centers, such as Traverse City and Cadillac. Recreational activities may capitalize on the natural, rural setting of the Fife Lake Community.
- **Income.** In 2019, the median household income of the Fife Lake Community was lower than Grand Traverse County (\$54,091 and \$63,575, respectively). This aligns with lower median home values also in this area. Recreational opportunities may support residents of more modest incomes through affordable activities such as biking and hiking. Specialized forms of recreation, such as clubs or associations, may also be considered for outliers with high incomes as evidenced by a high mean household income (\$85,405) and tourism.
- **Labor Force.** The Fife Lake Community had a much lower percentage of the population participating in the labor force than Grand Traverse County (43.1% and 65.2%, respectively). This suggests that a considerable portion of Township and Village residents are retired. Recreational opportunities should consider features that support an aging population, such as universal design and passive activities.

Chapter 3 – Administrative Structure

At this time, the Village of Fife Lake operates and maintains parks within the Fife Lake Community. The Township maintains the Walton Cemetery and also provides some monetary contributions to the Village's operation and maintenance efforts. The Village and Township of Fife Lake do not currently operate a Parks and Recreation commission, committee, or board and all decisions related to parks within the Fife Lake Community are the responsibility of the Village Council and the Joint Planning Commission.



In 2020-2021, approximately \$25,000 was allocated to operate and maintain parks from the Village's general fund. At this time, Township funding has been allocated to parks (via the Village) from the Township's general fund. Additional support (non-monetary & monetary) for parks and recreation is provided by several local organizations such as the Historical Society, the Downtown Development Authority (DDA), the Public Library, and other interested citizens. The DDA budgets roughly \$4,500 for parks and recreation efforts, which contributes to beautification efforts downtown in the Village.

In absence of a Parks and Recreation board in either the Village or Township, the Joint Planning Commission may assume responsibility for developing, adopting, and amending the recreation plan, with support from the Township Board and Village Council.

Volunteers. In addition to staff, volunteers play a key role in recreation services for the Fife Lake community. The YouthWork Conservation Corps has participants from Forest Area Schools, Kingsley Schools, and others and is available to partner on conservation and

skilled trades projects to maintain parks while operating educational and workforce development programming. The community also has a partnership with Civic Center South – Fife Lake pays dues to support park operations.

Chapter 4 – Inventory of Existing Parks, Natural Areas, and Recreation Facilities

This section provides a comprehensive list of parks, beaches, pathways, and natural features in and around Fife Lake.

Accessibility

Per the Michigan Department of Natural Resources guidelines, an assessment of the accessibility of each park to people with disabilities is required in this recreation plan. This assessment considers the accessibility of both the facilities themselves (as appropriate) as well as the access routes to them. The accessibility grading system is based on compliance with the Americans with Disabilities Act (ADA) through a five point system as defined in Table 4.1.

Table 4.1. MDNR Grading System for Accessibility

Accessibility Grade	Definition
1	None of the facilities/park areas meet accessibility guidelines
2	Some of the facilities/park areas meet accessibility guidelines
3	Most of the facilities/park areas meet accessibility guidelines
4	The entire park meets accessibility guidelines
5	The entire park was developed/renovated using the principles of universal design

Methods

The methods used to determine site accessibility and inventory were based on a compilation of information from the previous recreation plan, verification through site visits, information provided through Village and Township officials, and knowledge provided through other local entities.

Fife Lake Parks and Recreation Areas

The following list of parks includes the park name, size, service area, description of general use and amenities, and accessibility evaluation, per the national accessibility classification standards listed above. All community parks are located in the Village of Fife Lake.

Memorial Park

Memorial Park is a 0.13 acre park located between State Street and Merritt Street in the Village of Fife Lake. This small, wedge-shaped park is located right in the middle of the Downtown Business District. Park amenities include benches, an open manicured lawn, a monument to the Armed Forces, a historical kiosk, and a community notice board. The park hosts a number of social and community events every year, including the Fife Lake Farmer's market. Memorial Park is in very good condition and is well maintained. Memorial Park serves the entire community and surrounding townships.

Accessibility Score: 4

Fife Lake Area Park

Fife Lake Area Park is a 9-acre park located east of downtown between State Street and Bates Street. Park amenities include a large baseball field with bleachers and a backstop, picnic benches, BBQ grills, a pavilion, playground equipment, two tennis courts, a basketball court and a skate park. The basketball court is in good condition; however, the perimeter of the court lacks fencing, allowing missed shots to roll into the parking lot. The two tennis/pickleball courts are in fair condition. Pavement around the playing area is starting to deteriorate. The surface area around the skate-park is in good condition. The baseball field, pavilion, and playground equipment are in good condition, although there is need for a new outfield fence. Movies in the park has moved to the baseball field. There is an overall lack of playground equipment for toddlers. Fife Lake Area Park serves the entire community and surrounding townships.

Accessibility Score: 2

Sandy Beach

Sandy Beach is a small (50' by 70') beach located on Fife Lake just east of the Downtown Business District. The beach is in very good condition and appears to be well maintained. Sandy Beach serves the entire community. There is no public parking at this site, but it is a short walk from downtown and accessible by foot.

Accessibility Score: 1

Pierce Street Park (formerly Snowbowl Park)

Pierce Street Park is a 6.5-acre area just south of the Fife Lake Elementary School. The bowl-shaped area is sparsely vegetated and primarily used for sledding and snowmobiling in the winter. A 9-hole disc golf course provides recreation in the summer. While shooting platforms are not yet completed, the course contains baskets. The park's perimeter provides access for snowmobiles and ORVs from Fourth Street to the Village of Fife Lake. A connection to the North Country National Scenic Trail is also present. This area spans property owned by the Village of Fife Lake and Forest Area Schools. The park is primarily a natural area, with no water or power present on the site. A few port-a-johns have been added. Signage is needed to reflect the park's new name. Pierce Street Park serves the entire community and surrounding townships.

Accessibility Score: 1

Lakeside Park

Lakeside Park is a 0.5-acre park on State Street, located in the middle of the Downtown Business District. The park is situated on a gradual hill overlooking Fife Lake. Park amenities include benches, a picnic table, a walking path, a beach and swimming area, a gazebo, a large open lawn, underground sprinklers, a historical kiosk, and great view of the Lake. The Michigan DNR installed a boat dock directly adjacent to the park, providing access to Fife Lake. A map of the North Country Trail and signage was also recently installed. Lakeside Park is in very good condition and is well maintained. Lakeside Park serves the entire community and surrounding townships.

Accessibility Score: 3

Fife Lake Elementary School

The Fife Lake Elementary School playground is located behind the elementary school off State Street. The entire school property is comprised of 24.9 acres. Playground facilities include playground equipment and swings. There are also a series of outdoor basketball hoops located behind the school building.

Accessibility Score: 2

North Shore of Mirror Lake

The Village of Fife Lake owns a 0.34-acre parcel along the north shore of Mirror Lake. This site is currently undeveloped. Mirror Lake is a ten-acre lake in the western portion of the Village, south of Fourth Street. The lake is primarily used for fishing.

Accessibility Score: 1

Township Marsh – W. State Street

The Township owns an approximate 22-acre marsh within the Village limits. This marsh is located across from the Fife Lake Elementary School and preserves a unique natural area within the Village. The site is currently undeveloped.

Accessibility Score: 1

Walton Cemetery

The Walton Cemetery is about 4.1 acres and located on Elliott Road, at the intersection of Elliot Road and Medrak Road. It includes several graves, ranging from the early 1800s to the present.

Accessibility Score: 1

Civic Center South

Civic Center south is a 60-acre regional park located in the Village of Kingsley; however, Fife Lake Township provides monetary support to the park and has representatives on the Board of Directors. Through this partnership, residents of Fife Lake have access to the park. This park offers 2 softball fields, 2 soccer fields, a basketball court, a children's playground, an ice-skating rink, a 0.5-mile walking trail, a pavilion for rental, and 2 disc golf courses. A horseshoe pit is also planned. The Center also offers baseball, softball, and soccer leagues during the summer. The park is in very good condition and well maintained. It serves several townships, as the Board of Directors contains representatives from Fife Lake Township, Mayfield Township, Paradise Township, and the Village of Kingsley.

Accessibility Score: 4

Public Water Access

Fife Lake Township and the Village of Fife Lake each own and manage a public water access point. These are further described below:

DNR Fife Lake Boat Ramp and Dock

The Michigan Department of Natural Resources owns and manages a public boat launch, parking area, and courtesy pier on Fife Lake. The boat launch is located immediately adjacent to Lakeside Park in the Downtown Business District. The site is approximately 2.4 acres and contains paved, defined parking spaces for vehicles and boat trailers, with additional parking available across State Street. Pavement was replaced in 2015 at no cost to the Village. This boat launch is the primary public launch site for Fife Lake.

Accessibility Score: 1

Fife Lake Public Boat Launch (South)

Fife Lake Township provides a boat launch site on about 0.5 acres along the south side of Fife Lake. This site has a natural surface and allows access directly from the shore into Fife Lake. There are no docks or defined parking areas on the site. A picnic table and port-a-john are located on the site. There are no ADA features on the site.

Accessibility Score: 1

Walton Marsh

Walton Marsh is an approximate 25-acre marsh that is primarily used for fishing. The site is partially owned by the state of Michigan.

Accessibility Score: 1

Public Road Ends

There exist several (approximately eight) locations within the Township and Village where old platted rights of way continue to the water's edge offering public access to Fife Lake. These are generally not well marked and are unimproved, but do offer access to the lake for area residents.

Accessibility Score: 1

Pathways

Snowmobile Access

The Village of Fife Lake permits snowmobile access on the right-of-way or shoulder of every street within the Village. The Village is currently reviewing an ordinance that would allow ORV access as well. The DNR-designated snowmobile trail LP 5 provides regional access, connecting the Township and Village to miles of trails in State land. Snowmobiles are also allowed on the right-of-way/shoulder of main roads within the Township and Village, and many ORV trails mentioned below provide snowmobile access and connectivity.

North Country National Scenic Trail

The North Country National Scenic Trail (NCT) traverses over 4,000 miles from the Adirondacks of New York to North Dakota. Managed under the National Park Service, portions of the trail are located in Fife Lake Township. Recently, the North Country Trail

Association developed a trail spur connecting the North Country Trail with the Village of Fife Lake.

Equestrian Trails

Fife Lake Township contains the Southern Spur of the Shore-to-Shore Equestrian Trail. This trail is managed by the Michigan DNR and provides 420 miles of linear trail system from Lake Michigan to Lake Huron. The southern spur extends south from Scheck's Place Trail Camp through Fife Lake Township, to Hopkins Creek Equestrian Campground and Trail Camp and ends just north of Cadillac. The surface through Fife Lake Township is primarily dirt/natural.

ORV Access

Fife Lake Township contains several DNR-designated ORV routes and trails, which connect to the broader region. Some of these routes require an ORV license and/or a trail permit. These routes include the Grand Traverse Motorcycle Trail, MCCCT Cross State Connector Trail, and the Grand Traverse ORV Route. The local trail club is ORV – Twin Bay Trail Riders, Inc. ORVs can also ride on Grand Traverse County roads and along many DNR roads in state forest lands.

Sidewalks

The Village of Fife Lake has an extensive sidewalk system throughout the Downtown Business District. There may be opportunities to provide sidewalks in Village residential neighborhoods as an extension of this system.

Regional Assets

Fox Run Family Campground

The Fox Run Family Campground (formerly Oak Grove Campground) is located near the Township's southern border, just west of US-131. It is a traditional family-oriented campground featuring both rustic tent camping and full hookup RV sites. It also includes a playground area, horseshoe pits, restrooms and shower facilities. It all contains a small general store for campers.

Spring Lake State Forest Campground

The Spring Lake State Forest Campground is located on Spring Lake, just west of Fife Lake. Campground amenities include 32 campsites, vault toilets, a water-well (with hand pump), a boat launch and off-road vehicle trails.

Springfield Recreational Area (Springfield Township)

The Springfield Recreational Area is located in neighboring Springfield Township (Kalkaska County). The park is approximately 82.7 acres and offers several amenities including trails, playground equipment, a pavilion, and outdoor meeting space.

Grand Traverse County

Grand Traverse County provides numerous parks and recreation opportunities within a reasonable distance from Fife Lake. Traverse City contains a variety of parks offering recreation activities, beaches, and natural areas. The Grand Traverse County Civic Center is located in the City, providing a hub for organized recreation in the County. The Brown Bridge Quiet Area is located only about 11 miles from the Village of Fife Lake and offers approximately 1,300 acres of property along the Boardman River with natural trails, paddling opportunities, and scenic views.

MDOT Fife Lake Roadside Park

Located north of the Village on the east side of U.S.-131, the MDOT operates a small seasonal roadside park for travelers. The site is about ten acres in area and contains restroom facilities, outdoor grills, and several picnic tables in a scenic wooded lot.

Cadillac

Cadillac provides 117 acres of parks within a reasonable distance from Fife Lake. These include William Mitchell State Park, Kenwood Park & Beach, a variety of local parks, and over 10 miles of pathway. The White Pine Trail also travels along Lake Cadillac, providing a regional connection from Cadillac to Grand Rapids.

Natural Assets

Fife Lake

Fife Lake is a 1.2 square-mile lake located on the banks of the Village and Township of Fife Lake. The shore area of the lake is primarily lined with seasonal and permanent residential dwellings. The lake is primarily used for fishing, boating, swimming, and other forms of recreation. A Special Assessment District was created to treat the lake for milfoil. Public access to the lake is provided by a formal public boat launch near the Village of Fife Lake and several informal public access sites along the southern portions of the lake.

Mirror Lake

Mirror Lake is a round, 10-acre lake located just west of the Downtown Business District. The lake is primarily used for fishing and swimming. The Village of Fife Lake owns five wooded lots (0.26 acres) along the northern shore of the lake.

Regional Lakes

There are a number of other lakes (private lakes) within the area that provide access to water activities, such as:

- Spring Lake
- Twin Lakes
- Dollar Lake
- Pickerel Lake
- Mud Lake
- Headquarters Lake

Watersheds

There are a number of small creeks and streams throughout the Fife Lake Community. Creeks and streams in the northern portions of the Fife Lake Community are part of the Boardman Watershed and eventually flow into the Boardman River. Creeks and streams in the southern portions of the Fife Lake Community are part of the Manistee Watershed and eventually flow into the Manistee River.

Pere Marquette State Forest Area

The Pere Marquette State Forest Area encompasses more than 11,000 acres in Michigan. Large portions of the Forest are located in Fife Lake Township.

Cultural Assets

Fife Lake Area Schools

Fife Lake Township is served by three school districts: the Forest Area Schools District, the Kingsley Area School District, and the Manton Consolidated School District. The majority of the children living in the Township attend schools in the Forest Area Schools District.

The Forest Area School District consists of two separate campuses located a few minutes apart. Fife Lake Elementary is located in the Village of Fife Lake and houses preschool through third grade students. Forest Area Middle and High School is located within Springfield Township, between the communities of Fife Lake and South Boardman, and includes fourth through twelfth grade students.

Fife Lake Library

The Fife Lake Community Library is located near downtown Fife Lake on Lakecrest Lane. Citizens of the Village and Township contribute financially to the library via a millage, which is part of the Traverse Area District Library (TADL) System. Among other features, the library has a large open deck with a great view of Fife Lake and a community meeting room. The library is equipped with Wi-Fi internet access, several computers (with Microsoft applications), fax machines, and copy machines. The library is open Tuesday through Saturday and provides citizens opportunities to check out books, periodicals, DVD's, videos, and audio books.

American Legion

The American Legion Post 219 functions as the community center and social gathering hub for the Fife Lake community. Incorporated by Congress in 1919 as a veteran's organization, it has become the largest wartime veterans service organization in the nation and is comprised of local posts, such as that in the Village of Fife Lake. Post 219 family includes Veterans, Sons, Riders, and Women Auxiliary. The American Legion provides regular meals and events. They also host holiday events for the community.

Fife Lake Historical Society

The Fife Lake Historical Society operates three buildings around the Fife Lake area, preserving a large collection of items such as photos, artifacts, and family histories. The Fife Lake Historical Museum is located downtown in the Village and offers residents and visitors over 50 exhibits which detail the area's past. The museum is run by the local historical society and is operated as a nonprofit facility. It is open to the public during limited hours in the spring and summer only.

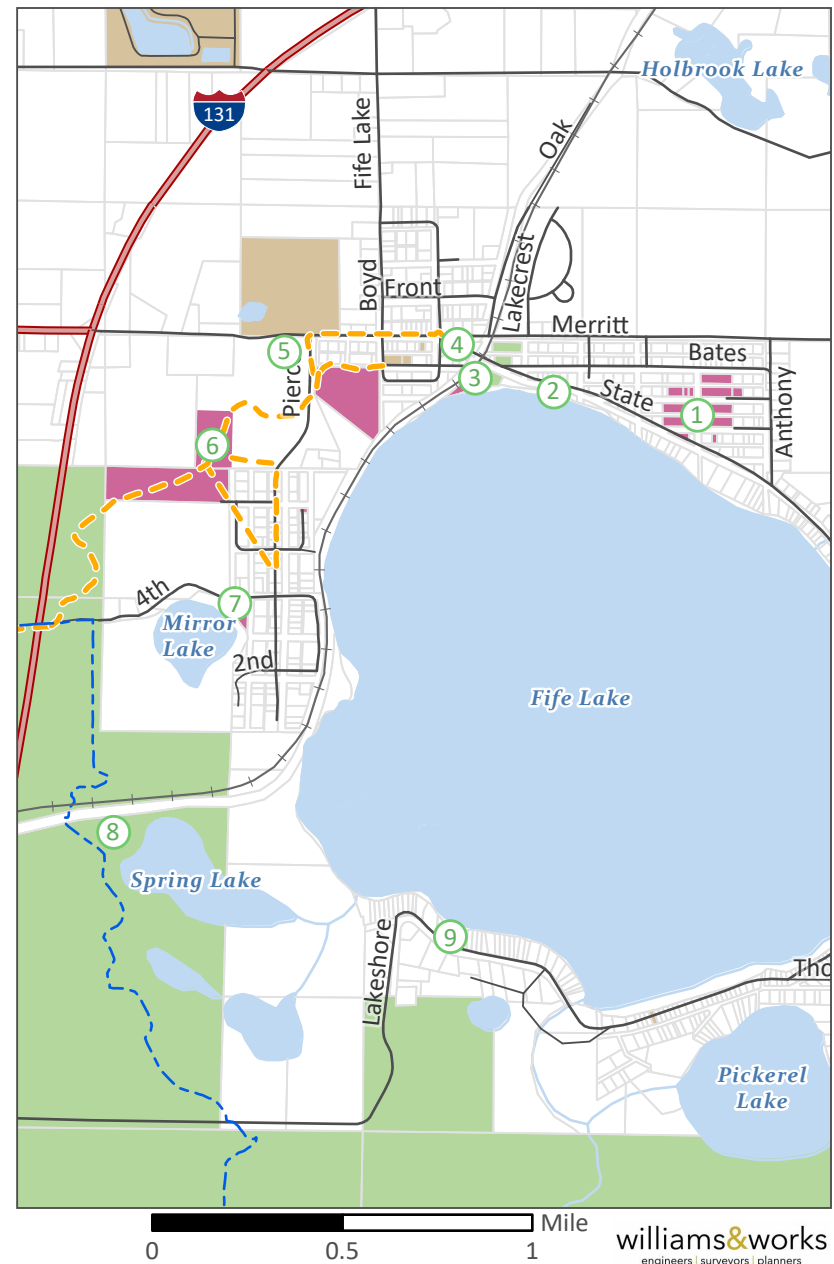
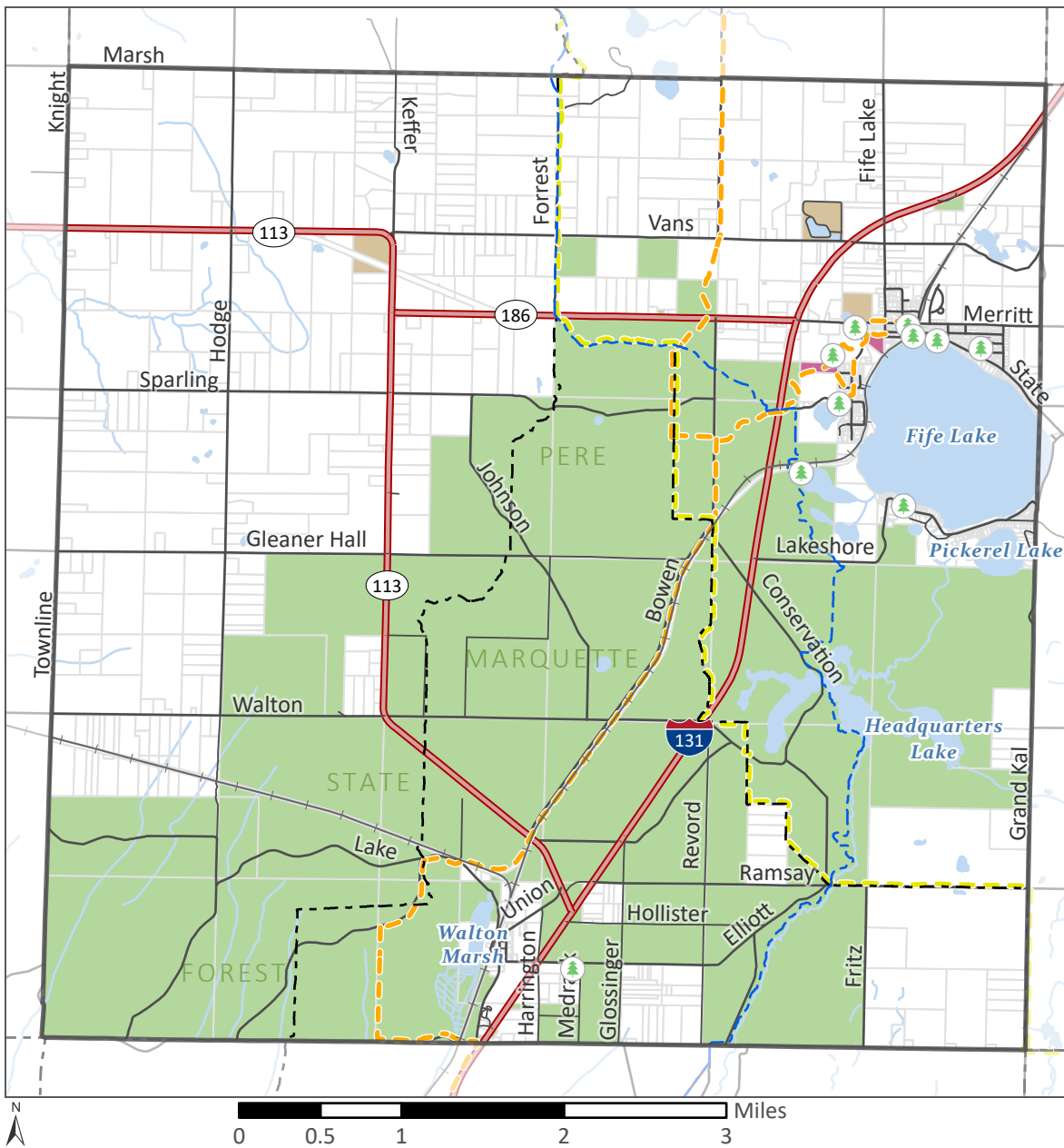
The historical society also operates a one-room country school house exhibit in the original library building, also in the Village. The schoolhouse was constructed in 1878 for the population living along the north side of Fife Lake, but was quickly moved to a larger building after the Village was incorporated. The building was then used as the township hall and later the public library. Once the library was expanded, Fife Lake Township offered the building to the historical society, who now stages it as a realistic representation of a schoolhouse in the 1880s.

The Fire Barn is the third building maintained by the historical society. This building was built in 1876 and originally used as the schoolhouse for another population living around Fife Lake ("Southtown"). When the Village of Fife Lake was incorporated and a larger school was built, this building was converted to host the volunteer firefighting team. Today it contains historic uniforms from over 100 years ago, firefighting equipment, a 1937 fire truck, and several displays.

The historical society also maintains a historic walk throughout the Village of Fife Lake. This includes 27 display plaques that contain photos and explanations of historic Fife Lake. Photos were all taken during the late 1800s and early 1900s, contributing to the rich and unique history of the area.

Fife Lake Historical Walk

Sponsored by the Fife Lake Historical Society, the Fife Lake Historical Walk is a self-guided tour using 27 display plaques located throughout the Village. The display plaques depict businesses, homes and historic sites as they were during the last quarter of the 19th century and the first quarter of the 20th century. Each plaque includes a historic photo and brief write-up explaining the nature of the feature.



Map 4 Public Land, Parks & Recreation

Fife Lake, Grand Traverse County, MI

Data Sources: MI Open Data, MI DNR

Legend

- State Land
- Township Land
- Village Land
- DNR Snowmobile Trail
- Equestrian Trail
- DNR Hiking Trail
- North Country Trail
- Rivers
- Lakes
- Railroad

Parks

1. Fife Lake Area Park
2. Sandy Beach
3. Lakeside Park & DNR Boat Launch
4. Memorial Park

5. School Playground

6. Pierce Street Park
7. Mirror Lake Village Property
8. Spring Lake Campground
9. Fife Lake Public Boat Launch (South)

williams&works
engineers | surveyors | planners

Other Planning Initiatives

Networks Northwest

Networks Northwest provides several informational resources for community development, including recreation and natural resource planning. A few notable resources include “A Framework for Recreation” and “A Framework for Natural Resources,” which are reports prepared as part of “Framework for Our Future: A Regional Prosperity Plan for Northwest Michigan.” These reports contain information and tools that can help stakeholders identify regional trends and address issues in each of these topics. Additionally, Networks Northwest provides links to numerous other helpful resources such, as non-motorized road and trail maps and information.

Explore 131 North

The Village of Fife Lake is a community partner with Explore 131 North, which is a collaborative project between local government and community leaders along 90 miles of the northern U.S. 131 corridor. Other community partners include Cadillac, Manton, Kalkaska, Mancelona, Boyne Valley, Walloon Lake, and Petoskey. These communities have recognized the high volume of traffic along U.S. 131 and their ability to provide travelers with outdoor recreation, scenic vistas, and local business goods and services. Explore 131 North provides a hub of information regarding featured destinations, things to do, places to eat and stay, and local events.

Northwest Michigan Regional Non-Motorized Transportation Plan

This Plan, funded by the Michigan Department of Transportation and created by Networks Northwest (previously Northwest Michigan Council of Governments) evaluated existing conditions and identified opportunities for enhanced non-motorized travel in northwest Michigan. This plan envisions a non-motorized trail around Fife Lake, with connections in the Village of Fife Lake and Spring Lake campground, similar to the route proposed by the 2010 Fife Lake Recreation Plan.

Previous Michigan Department of Natural Resources Grants in Fife Lake

The Village of Fife Lake has been awarded two grants from the Michigan Department of Natural Resources.

1. Project Number—BF89-619
Year: 1989
Amount: \$29,550
Type: Recreation Bond Fund Grant
Purpose: The development of Fife Lake Park

2. Project Number—TF-697
Year: 1983
Amount: \$55,000
Type: Acquisition—Natural Resources Trust Fund
Purpose: Access to Fife Lake

To date, Fife Lake Township has not been awarded a grant from the Michigan Department of Natural Resources.

Chapter 5 – Planning and Public Input Process

Several planning methods can be used to analyze a community's recreation needs. Among these are comparisons to the recreation system and facility development standards developed by the National Recreation and Park Association (NRPA). The following tables provide a comparison of the Village and Township parks and recreational facilities to these standards in order to help inform the planning process. Map 5 depicts the estimated service areas for mini-parks, neighborhood parks, and community parks based on recommended NRPA service areas.

Table 5.1. Mini-Park	
Description	Used to address limited, isolated, or unique recreational needs
Service Area	Less than ¼-mile radius in a residential setting
Desirable Size	Less than 1 acre
Acres per 1,000 people	0.25 to 0.5 acres
Mini-parks in Fife Lake	Memorial Park, Sandy Beach

Table 5.2. Neighborhood Park	
Description	Often the basic unit of the park system, this park serves as the recreational and social focus of a neighborhood. It often focuses on informal active and passive recreation.
Service Area	¼- to ½-mile radius, uninterrupted by non-residential roads and other physical barriers
Desirable Size	5 to 10 acres
Acres per 1,000 people	1.0 to 2.0 acres
Neighborhood parks in Fife Lake	Pierce Street Park

Table 5.3. School-Park	
Description	Depending on circumstances, combining parks with school sites can fulfill the space requirements for other classes of parks, such as neighborhood, community, sports complex, and special use.
Service Area	Determined by location of school district property
Desirable Size	Variable
Acres per 1,000 people	Variable
School-parks in Fife Lake	Fife Lake Elementary School

Table 5.4. Community Park	
Description	A park that serves a broader purpose than a neighborhood park, with a focus on meeting community-based recreation needs as well as preserving unique landscapes and open spaces.
Service Area	Determined by site quality and suitability for use. Usually ½- to 3-mile radius.
Desirable Size	As needed to accommodate desired uses, usually 30 to 50 acres.
Acres per 1,000 people	5.0 to 8.0 acres
Community parks in Fife Lake	Fife Lake Area Park, Lakeside Park

Table 5.5. Natural Resource Areas	
Description	Land set aside for preservation of significant natural resources, remnant landscapes, open space, and visual aesthetics/buffering.
Service Area	Dependent upon resource availability and opportunity.
Desirable Size	Variable
Acres per 1,000 people	Variable
Natural resource areas in Fife Lake	North Shore of Mirror Lake, Township Marsh, Walton Marsh

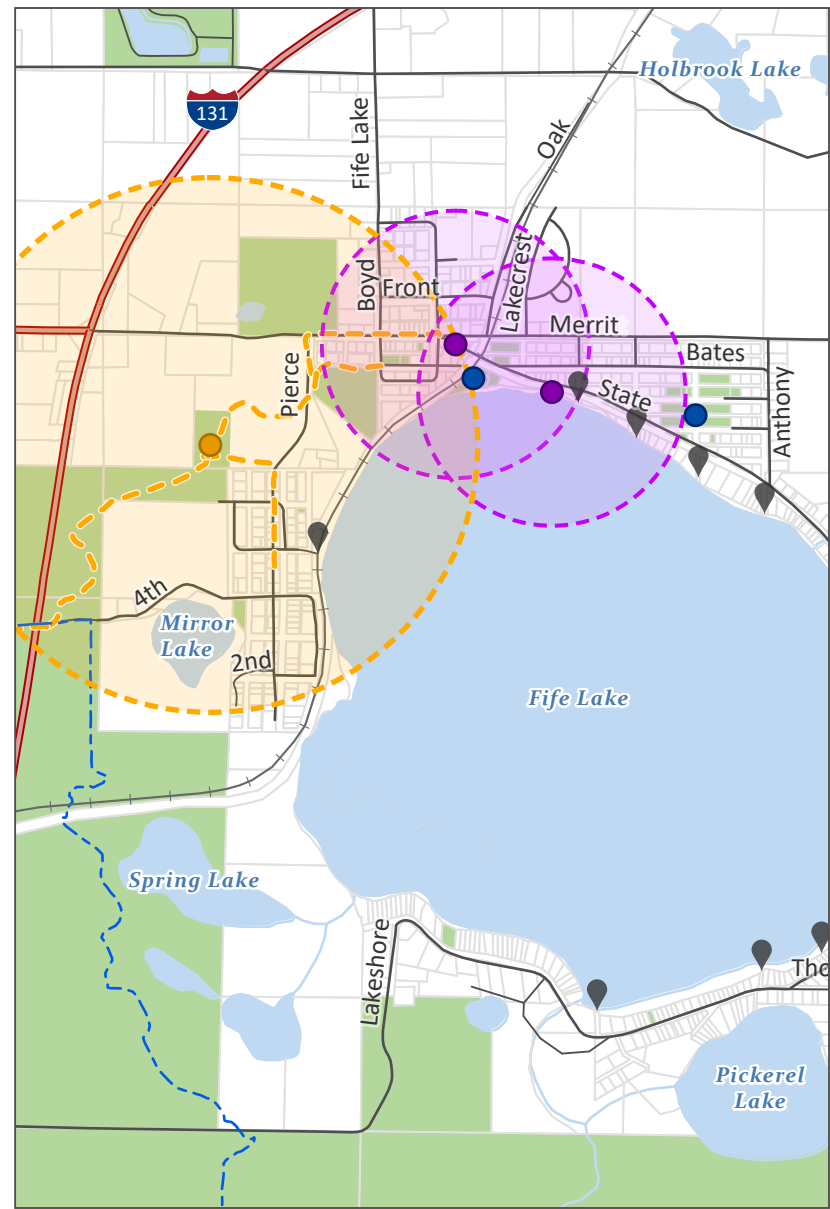
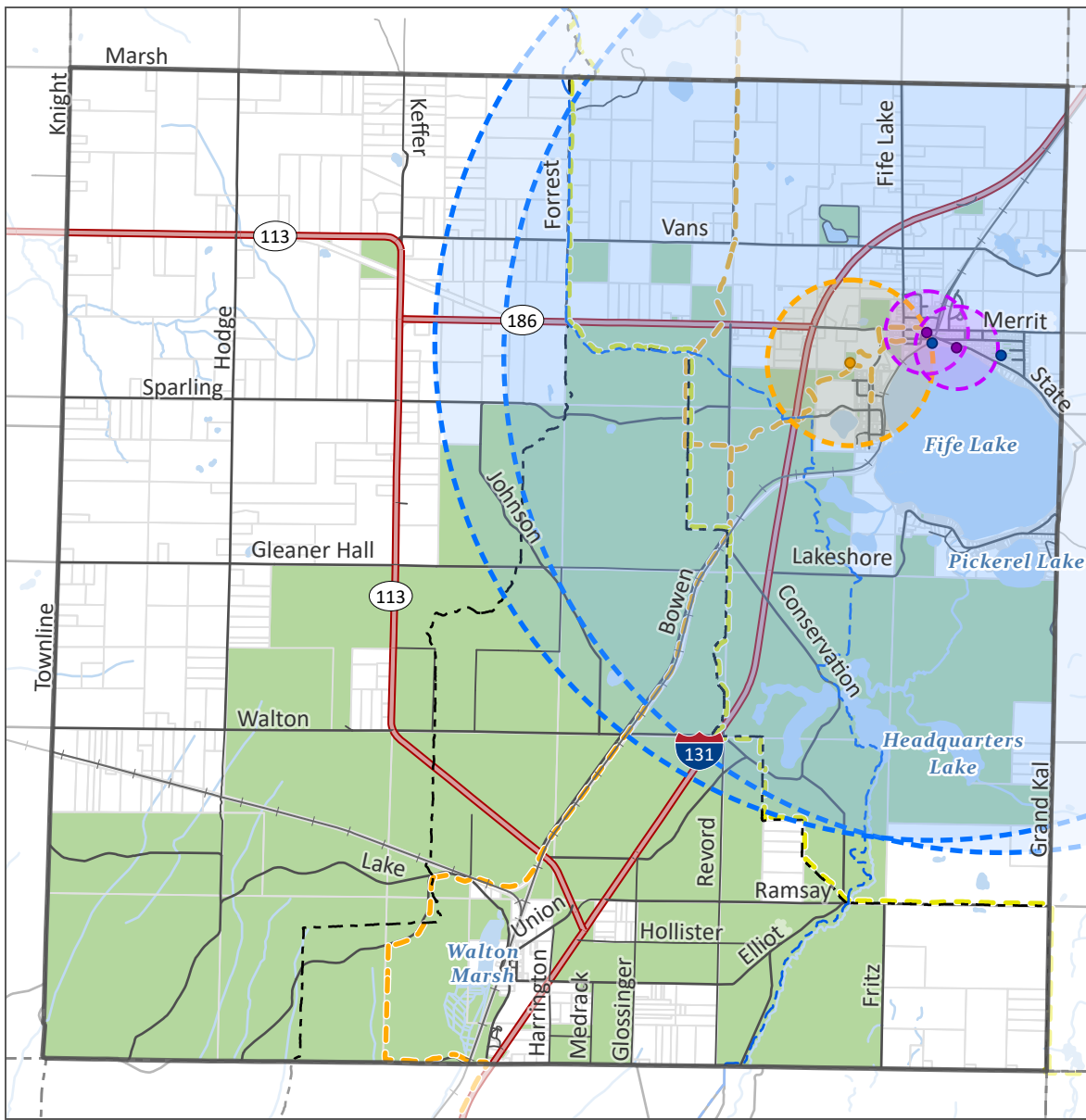
Table 5.6. Regional / Metropolitan Park	
Description	Land set aside for preservation of natural beauty or environmental significance, recreation use, or historic or cultural interest use.
Service Area	Several communities within a 1-hour drive time
Desirable Size	200+ acres, but can vary based on desired use
Acres per 1,000 people	5.0 to 10.0 acres
Regional/metropolitan parks in/near Fife Lake	Springfield Recreation Area, Brown Bridge Quiet Area, William Mitchell State Park, Pere Marquette State Forest Area

Table 5.7. Sports Complex	
Description	Consolidates heavily programmed athletic fields and associated facilities to larger and fewer sites strategically located throughout the community.
Service Area	Strategically located community-wide facilities
Desirable Size	Determined by project demand. Typically 40-80 acres.
Acres per 1,000 people	Variable
Sports complex in/near Fife Lake	Civic Center South

Table 5.8. Special Use	
Description	Covers a broad range of parks and recreation facilities oriented toward single-purpose use.
Service Area	Variable-dependent on specific use
Desirable Size	Variable
Acres per 1,000 people	Variable
Special use parks in Fife Lake	Walton Cemetery, Spring Lake State Forest Campground, DNR Fife Lake Boat Ramp and Dock, Fife Lake Public Boat Launch (South)

Table 5.9. Park Trail	
Description	Multipurpose trails located within greenways, parks, and natural resource areas, with a focus on recreation value and harmony with the natural environment.
Service Area	Type I: Separate/single-purpose hard-surfaced trails for pedestrians or bicyclists Type II: Multi-purpose hard-surfaced trails for pedestrians and bicyclists Type III: Nature trails for pedestrians, hard or soft-surfaced
Desirable Size	Variable
Acres per 1,000 people	Variable
Park trails in Fife Lake	North Country National Scenic Trail (Fife Lake Spur), Snowmobile Trail LP 5, ORV trails

Table 5.10. Equestrian Trail	
Description	Trails developed for horseback riding
Service Area	Loop trails usually located in larger parks and natural resource areas, sometimes developed as multi-purpose trails where conflict can be avoided.
Desirable Size	Variable
Acres per 1,000 people	Variable
Equestrian trails in Fife Lake	Shore-to-shore trail, southern spur



Map 5
Service Areas
 Fife Lake, Grand Traverse County, MI

Data Sources: MI Open Data, MI DNR

Legend

- Community park
- Mini-park
- Neighborhood park
- 📍 Road End Lake Access
- Public Land
- DNR Snowmobile Trail
- Equestrian Trail
- DNR Hiking Trail
- North Country Trail
- Mini Park Service Area (0.25 mi.)
- Neighborhood Park Service Area (0.5 mi.)
- Community Park Service Area (3 mi.)

Facility development standards, also developed by the National Recreation and Park Association, provide an estimate of facilities that may be needed in a community. These are based on the area's population to determine facility needs that are met or lacking. The Fife Lake Township and Village population was estimated at 1,978 people in 2019. This can be rounded to 2,000 for ease of calculation. Once a need is estimated, the area's existing facilities can be compared to determine if there are deficiencies.

Table 5.10. NRPA Suggested Standard Facility Needs

Activity/Facility	Standard (per number of people)	Number Recommended per 2019 Population Estimate	Existing
Badminton	1/5,000	Less than 1	0
Basketball	1/5,000	Less than 1	1
Handball	1/20,000	Less than 1	0
Ice Hockey	Indoor: 1/100,000 Outdoor: depends on climate	Less than 1	0
Tennis	1/2,000	1	2
Volleyball	1/5,000	Less than 1	0
Baseball	1/5,000	Less than 1	1
Field Hockey	1/20,000	Less than 1	0
Football	1/20,000	Less than 1	0
Soccer	1/10,000	Less than 1	0
Golf-Driving Range	1/50,000	Less than 1	0
¼-Mile Running Track	1/20,000	Less than 1	0
Softball	1/5,000	Less than 1	0
Multiple Recreation Court (basketball, volleyball, tennis)	1/10,000	Less than 1	0
Trails	1 system per region	1	1
Archery Range	1/50,000	Less than 1	0
Combination Skeet and Trap Field	1/50,000	Less than 1	0
Golf			
9-hole	1/25,000	Less than 1	0
18-hole	1/50,000		
Swimming Pools	1/20,000	Less than 1	0
Beach areas	N/A	N/A	2

Recreation Analysis

The Fife Lake community contains a variety of parks that can be categorized according to NRPA standards. Additionally, some regional parks provide recreational opportunities that serve Fife Lake residents. Overall, the Fife Lake community offers a range of parks that contribute to different needs in the community. The natural setting of the Township and smaller urban parks in the Village complement each other in providing a range of services and opportunities.

Most of the parks in Fife Lake are located in the Village, while the Township provides more natural areas and contains a large portion of the Pere Marquette State Forest. In general, parks and trails are lacking along the south side of Fife Lake, where there remains a higher residential density than elsewhere in the Township. Additionally, sidewalk connections are not prevalent outside the immediate Village downtown. Connectivity and park facilities should be considered for their ability to adequately provide facilities and connectivity to areas with a greater population density.

Map 5 provides an estimated service area for each developed park in accordance with the NRPA service area recommended for each park type. While community parks serve the entire Village and broader portions of the Township, mini-parks and neighborhood parks have a smaller service range targeted towards the Village population. Therefore, the Village has the greatest range and overlap of park services. This is appropriate given the higher population density in the Village; yet, higher density areas along the south side of Fife Lake should not be overlooked. While much of the Township is outside recommended NRPA park service areas, some types of parks/natural areas have variable service areas and may still accommodate Township residents. Further, the Township's natural areas also provide recreation experiences for rural residents, with the Township containing a greater variety of trails. Therefore, the Township and Village offer complementary services based on population density and the natural setting. The strengths of each should continue to be integrated and promoted to offer a variety of recreational opportunities in the community.

NRPA also provides suggested standard facility needs, as identified in Table 5.10. Due to the small size of the Township and Village population, many of these standards are not applicable. The Fife Lake community meets all recommended standards for those standards that could be determined.

Comparison to recreation standards provide only an initial analysis of a community. NRPA standards were established in 1983 and do not necessarily represent current popular recreation activities such as skateboarding and disk golf. They also do not account for seasonal populations, which can greatly increase the need for additional recreation services during peak months. In addition, NRPA states, "facility standards are useful as guidelines,

but that a community should determine what mix of facilities best meets its specific needs. The primary concern of park and recreation administrators is to see that there is enough park land, located in the right places, at the right time people are there to use it.”¹ Furthermore, the Michigan Department of Natural Resources highly recommends that standards be used in conjunction with other methods to determine recreation deficiencies and priorities.

Community Survey

In order to gain greater insight into the recreation needs of the Fife Lake Community, the information provided from the NRPA analysis was combined with the objectives outlined in the previous Fife Lake Recreation Plan, the recreation inventory, a community survey, and conversations with the Area Planning Commission to help establish the objectives and action strategies of this plan. The community survey was conducted online during the Spring of 2021 to address both Master Plan and Recreation Plan needs. The complete results are attached in [Appendix A](#).

Based on the survey results, the following points were recommended for consideration during the update of goals, objectives, and actions in this Recreation Plan:

- The area’s setting was largely influential in attracting residents, as the majority of survey respondents indicated their top choices for living there were its small-town lifestyle, natural beauty, and rural lifestyle.
- Revitalization of the Village downtown was linked to eliminating building vacancies and having a strong sidewalk network.
- The most challenging area to navigate was identified at the intersection of State and Merritt Streets. Visibility was noted as difficult here due to the irregular design of the intersection. Additionally, access and congestion at parks were noted as issues, specifically at Lakeside Park and the Sandy Beach on State Street.
- An expanded sidewalk network was identified as very important to many respondents. Recommendations for an expanded network included sidewalks to the library, bus stop, DNR parking lot, all the way down State Street, to the grocery store, along Oak Street, Main Street, and Boyd Street. Crosswalks were also desired.

¹ Park, Recreation, Open Space and Greenway Guidelines, James D. Meretes., CLP and James R. Hall, CLP. A Publication of the National Recreation and Parks Association, 1995

- Natural resource preservation/management was identified as a top community characteristic contributing to a desirable future. Cleanliness and maintenance of the lake, beaches, and parks were often noted as important.
- Trails and sidewalks were of particular importance to respondents. Connectivity was given a high value, as many respondents indicating using the local sidewalk system and many desired trail connections into town or to the parks.
- Fife Lake was the most used recreational facility, followed by downtown sidewalks, the DNR boat launch, and Fife Lake Area Park.
- Several respondents identified a need for bathrooms and updated play equipment for children. Bathrooms were most commonly noted as necessary at Lakeside Park.
- Water-based activities were most enjoyed by residents, including swimming, canoeing/kayaking, and fishing. Other popular activities focused on the natural and pristine setting often characteristic of the area, such as wildlife viewing, camping, and hiking in natural settings. The Area Planning Commission may consider how recreational opportunities can highlight the area's pristine setting.
- Downtown development and public facilities held the greatest importance in the Village Master Plan. These opinions align with the desire for downtown revitalization, retail and mixed uses, and sidewalk connectivity.
- Streets/roads and recreation goals were considered most important in the Township Master Plan. This corresponds with the desire for safe roadways downtown and accessibility of parks. The Area Planning Commission may consider how recreational accessibility may be enhanced, such as through an expanded sidewalk network, updated facilities, or preservation of natural areas.

Public Meeting and Plan Adoption

Following preparation of the plan, citizens were provided an adequate opportunity (at least 30 days) to review and comment on the plan prior to official recommendation by the Fife Lake Area Planning Commission and adoption by the Fife Lake Township Board and Village Council, respectively.

A draft of the plan was submitted to the Fife Lake Area Planning Commission and staff for their review and comments. A notice was published in the local newspaper (_____) on _____, notifying the public of the availability of the plan to provide them the opportunity to review and comment. The plan was available for public review at the Township and Village halls and the Township and Village websites. Suggestions received to

improve the plan were incorporated into the document, which was then revised and finalized.

A notice of the Village Council public meeting to be held on _____ to adopt the plan was also published in the same newspaper. The Fife Lake Area Planning Commission adopted the plan on _____.

Chapter 6 – Goals and Objectives

After considering community input and existing conditions in the Fife Lake community, a series of goals and objectives were developed to form the foundation of this Recreation Plan. The goals are intended to describe a final desirable condition for recreation over the life of this plan, but some goals will remain relevant beyond this timeframe. The goal statements are intentionally general, but considered attainable through concerted efforts. The objective statements tend to be more specific and may be regarded as milestones to achieving the goal.

1. Accessibility

Recreational land uses and facilities in the Village of Fife Lake and Fife Lake Township will be accessible to all local residents and visitors, with facilities that complement and promote the recreational use of Fife Lake and State Forest Lands.

Objectives:

- a. Ensure that park improvements improve ADA compliance, and pursue universal design when possible, for the safety and enjoyment of facilities by all ages and abilities.
- b. Construct ADA accessible flushable toilets and changing rooms at Lakeview Park
- c. Develop and incorporate wayfinding, directional, and site signage that directs visitors and residents to important landmarks, parks, and recreational facilities.
- d. Establish a marketing strategy and education program to promote parks and recreation facilities, such as through brochures, maps, signage, or other material.
- e. Enhance navigability at the intersection of State Street and Merritt Street through features such as through crosswalks, signage, or traffic calming measures.
- f. Pursue motorized and non-motorized pathways and trail connections to enhance connectivity where appropriate, continuing to reference this 2022-2026 Recreation Plan as a planning resource.
- g. Pursue opportunities to expand the sidewalk network and increase connectivity between the Village downtown to surrounding parks, facilities, and neighborhoods.

- h. Implement “Complete Streets” initiatives to design, construct, and maintain streets that accommodate all ages and abilities.
- i. Review and amend, as necessary, the Zoning Ordinance to promote pedestrian connectivity between neighborhoods, the Village downtown, natural features, and parks, such as through the inclusion of pathways and sidewalks in new developments or promoting mixed uses in appropriate areas.

2. Stewardship

Parks and natural areas will be well maintained and enhance the Fife Lake community character through the stewardship of natural resources, wildlife, and cultural characteristics.

- a. Maintain and improve existing recreational land and/or facilities that provide water access, educational opportunities, and scenic natural views for residents and visitors.
- b. Strategically acquire and develop new parks and parkland to protect natural areas, meet community needs, and provide a range of recreation opportunities for residents and visitors.
- c. Pursue opportunities to upgrade and improve park facilities, such as accessibility improvements to bathrooms (including flushable toilets), sport courts, playground equipment, and other similar features.
- d. Promote safety and cleanliness of parks and natural areas through regular maintenance, education about pollutants, and partnerships with local volunteer groups and nonprofit entities.
- e. Maintain a current Recreation Plan that fosters preservation of the area’s natural resources and connectivity of non-motorized trails and pathways.

3. Regional Coordination

The Village and Township of Fife Lake will continue collaboration with each other, surrounding communities, and the state of Michigan to improve and expand recreational opportunities for residents and visitors.

- a. Cooperate with the Michigan Department of Natural Resources (DNR) to identify areas of state-owned land for future acquisition by the Township for recreation development.
- b. Explore the feasibility of multi-jurisdictional parks and recreation organization between the Village and Township.

- c. Develop new and continued funding sources for improving and expanding recreation in the community.
- d. Continue and expand partnerships with neighboring communities, nonprofit organizations, and government entities and participate in the non-motorized transportation efforts of regional governments such as the Michigan Trails and Greenways Alliance, Grand Traverse Regional Land Conservancy, North Country Trail, and Networks Northwest.

Chapter 7 – Action Program

The following section details the strategic actions that will help the community meet the goals and objectives of this plan. This section describes the direction the Fife Lake Village and Township wish to take over the next five years to maintain and improve recreation opportunities. A description of each action is provided to indicate a basis for action, identify relevant goals, and provide a plan for such action. In addition, strategic actions should meet with all ADA requirements, where appropriate. Although a five-year time period will not be sufficient to accomplish all goals and objectives, the action program is intended to prioritize projects that may be achievable within five years.

The recommendations in this section are intended to be flexible and the following projects are not exhaustive. Future circumstances, such as funding and available opportunities, will likely influence the time and duration of projects. The following recommended actions are based on the input received from the community survey, Fife Lake officials and staff, and an inventory of existing conditions.

Pristine Recreation

The Fife Lake Community offers both pristine natural environment for recreation in Fife Lake Township that is complemented and enhanced by the small-town character and recreational amenities found in the Village downtown. This setting provides great opportunity for nature-based recreation and a vibrant, walkable downtown. Respondents in the community survey most enjoyed water-based activities (swimming, canoeing/kayaking, fishing) and those focused on the natural environment (wildlife viewing, camping, hiking). Preservation and management of these natural features were identified as a top characteristic that would contribute to a desirable future in the community. Therefore, opportunities to improve access to, knowledge of, and care for these natural features should be pursued. Specifically, this may include the following:

- **Availability.** Numerous trails are present in the Township through the Pere Marquette State Forest. The Community should consider providing information regarding the type, availability, and location of trails and recreation areas. This may be made available to the public through brochures, the Township/Village websites, maps, or other marketing strategy.
- **Cleanliness.** Cleanliness of parks and recreation areas was often noted as important by the public. Partnerships with local organization for clean-up days should be explored, along with an evaluation of parks and recreation facilities that need further maintenance.

- **Access.** Some natural features have limited access due to design. Where appropriate, ADA compliance should be pursued. This may include a barrier-free ramp across the beach and into the lake at Lakeside Park and upgrading equipment or facilities that are not ADA-compliant at parks, such as playground equipment and picnic tables. A small landing dock may also be constructed to improve access to Mirror Lake.

Navigation and Connectivity

Sidewalks and pedestrian connectivity were noted as very important to the community during the public survey. An expanded sidewalk network was highly desired and sidewalks were commonly used by those in the community. Further, connectivity on a broader scale was desired through a mix of residential and commercial uses, allowing all ages and incomes to access facilities and services. A strong sidewalk network and trail pathways can support a vibrant downtown and increase access to park facilities in the Village. The Community may consider strengthened connections into neighborhoods and adjacent parks, such as Sandy Beach and the Fife Lake Area Park. The 2010 Recreation Plan outlined a vision for a complete trail around Fife Lake. While recognizing that this is a large undertaking, the 2010 Plan noted that the sidewalk ends at Fife Lake Area Park and recommended a loop trail around this park. This loop would provide not only a “first-leg” of the pathway, but be a valuable addition to the park and is also supported by this Plan.

Further, the intersection between State Street and Merritt Street were identified as a hazardous area for pedestrian crossing. The Community may consider options for improving pedestrian access to and from Memorial Park at this intersection, such as through crosswalks, signage, or traffic calming measures.

Park Improvements

Some parks and recreation facilities would benefit from specific facility improvements to provide increased access and enjoyment in these areas. The community survey provided insight into the types of improvements desired. Further, the Village and Township demographic contains both a large retired population and young families, which have various recreation needs that should be considered (see Chapter 2).

This Plan recognizes that improvements are often coordinated with available funding and that all recommended improvements may not be achievable at one time. Other opportunities may also arise that are not listed below. However, the following

improvements are recommended based on current park popularity, recreation opportunities, existing conditions, and public input.

Fife Lake Area Park

- Restrooms
- Re-surface the tennis courts
- Additional exterior lighting
- Upgraded playground equipment
- Fencing around the baseball outfield and basketball court
- Loop pedestrian trail/pathway

Lakeside Park

- Install flushable, ADA-compliant restrooms and changing rooms
- Barrier-free ramp into the lake
- Wash station near boat launch

Pierce Street Park

- Updated signage to reflect new name
- Enhanced signage for disc golf holes
- Complete shooting platforms for disc golf

New Parks

- Explore the potential for acquiring land and/or developing new parks in Fife Lake Township, outside of the Village boundaries

Priority Plan

Table 7.1. Parks and Recreation Action Plan

Improvement	Relates to Goal	Priority
Trails & Connectivity		
Enhance access to Sandy Beach through an expanded sidewalk or trail network	1	High
Construct a loop trail in Fife Lake Area Park connecting to the existing sidewalk system	1	Medium
Improve safety at the intersection of State and Merritt Streets at Memorial Park	1	High
Maintenance		
Evaluate and prioritize necessary park maintenance needs and coordinate efforts with local organizations when applicable	2	High, ongoing
Marketing/Communication		
Identify park locations, amenities and facilities, access locations, and trails on websites, maps, or other digital and print media.	1, 3	High, ongoing
Park Improvements		
Construct a barrier-free ramp into the lake at Lakeside Park	1	Low
Construct a small landing dock at Mirror Lake	1	Low
Construct restrooms at Fife Lake Area Park	1, 2	Low
Re-surface tennis courts at Fife Lake Area Park	1, 2	Medium
Upgrade site features at Fife Lake Area Park (lighting, fencing, equipment, etc.)	1, 2	Medium
Install wash station near the boat launch at Lakeside Park	1, 2	Low
Construct restrooms and changing rooms at Lakeside Park	1, 2	Medium
Update signage at Pierce Street Park to reflect its new name	1, 2	High
Upgrade disc golf features, such as signage and shooting platforms at Pierce Street Park	1, 2	Low

Appendices

Attach:

- Letters to Community Partners
- All materials used in community engagement (survey, sign-in sheets, data analysis, etc.)
- Public Hearing Notices, etc.
- Resolutions regarding Plan Adoption